



**ENERGY &
RESOURCES**
KNOWLEDGE HUB

INNOVATION LAUNCHPAD

Giving SMEs the resources, knowledge,
networks and infrastructure to transform
ideas into enterprise.



THE UNIVERSITY OF
NEWCASTLE
AUSTRALIA

nier



JOIN US

Are you an established small business with an innovative idea or product for the energy or resources sector?

You are invited to work with our world-class researchers at the Newcastle Institute for Energy and Resources (NIER) to test, pilot and demonstrate your products leading to commercialisation and global competitiveness. Your business will be supported to innovate, commercialise and scale-up – with access to a collaborative office environment and industrial research infrastructure. The Launchpad will also provide programs and expertise to launch your business to the next level.

The Launchpad invites businesses that:

- Are registered in NSW and developing or delivering a product or service for the energy and resources sector;
- Are able to show impact on industry and the potential for job growth;
- Have developed a concept or product that requires testing in an industrial workshop; and
- Have been endorsed, or willing to seek endorsement, from one of the Launchpad partners to support their application into the program.

AN INITIATIVE OF THE NSW ENERGY AND RESOURCES KNOWLEDGE HUB

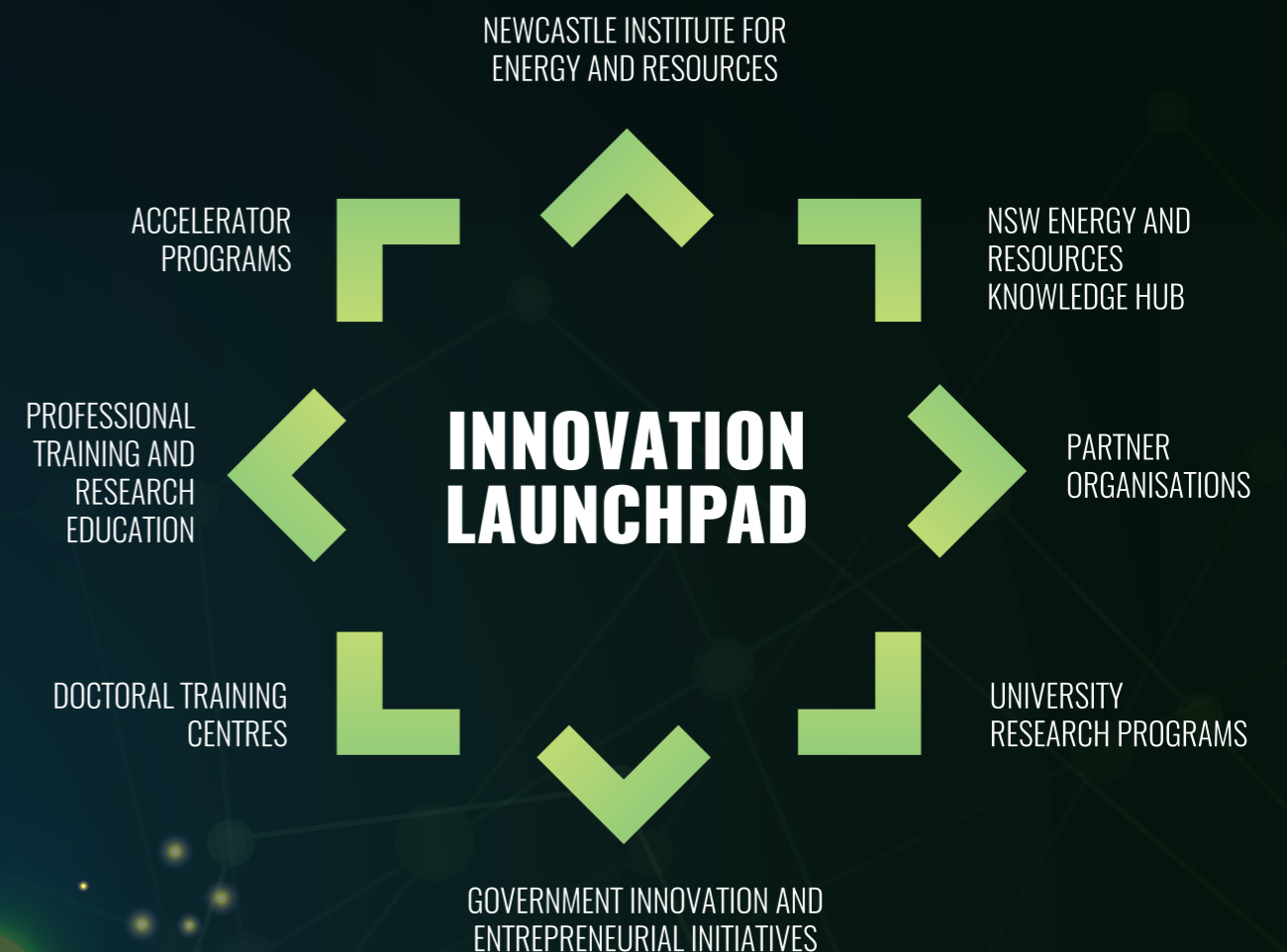
The Innovation Launchpad will be hosted by the Hub, a networked platform for the energy and resources sector to capture opportunities for growth, development, collaboration and innovation across New South Wales.

During their time at NIER, the Knowledge Hub will provide Innovation Launchpad participants with:

- Highly informative workshops, seminars and briefings by industry and research leaders across topics from the Mining Equipment, Technologies and Services (METS) and Energy sectors;
- Access to networking through regular events and collaborative opportunities; and
- Coordinated mentoring for businesses with support to identify market opportunities through formal introductions to key industry and government contacts.

LAUNCHPAD SERVICE DELIVERY

The Innovation Launchpad will provide the tangible solution to some of the biggest challenges facing industrial innovation, with real value being drawn from the multidisciplinary, multifaceted, engaged network of partners, programs and experts working together to transform the industry.



LAUNCHPAD PATHWAY

PHASE ONE



ENQUIRY

Company engages with Innovation Launchpad partner or NIER to seek endorsement into program.



EXPRESS INTEREST

Company submits expression of interest form to the Knowledge Hub.



PRE-ASSESSMENT

Assessment conducted by Knowledge Hub to assess suitability against established criteria.



MEET WITH NIER

Introductory meeting with NIER to explore company's alignment with research group.

PHASE TWO



PROPOSAL

Develop proposal for further assessment by Innovation Launchpad Steering Committee.



CONTRACT

Upon approval a research contract and service agreement are established.



RESEARCH

Company relocates to Launchpad and commences research with NIER.

PHASE THREE



TEST RESEARCH

Research outcomes tested through field trials with access to business development programs and assistance.

PHASE FOUR



COMPLETION

Conclusion of research and commercialisation of products if applicable, and completion of program.



FACILITIES

The Innovation Launchpad will be based at the NIER Precinct at the University of Newcastle's Callaghan campus.

Participants will be embedded with a NIER research group to provide high-impact research producing innovative outcomes to meet real world challenges. The NIER precinct includes purpose-built research facilities and encompasses extensive mineral, chemical and related technical laboratories, workshops, and five industrial-scale pilot plant workshops.

NIER provides a multidisciplinary model bringing together the University of Newcastle's leading researchers to address regional and global challenges facing resource sustainability, productivity and competitiveness associated with energy and resources infrastructure. The NIER engagement model connects academia and industry through a common platform for research in our core areas of energy and resources, enabling engagement in significant national and international research collaborations.

NIER will provide a range of open plan and flexible workspace areas, offices, informal and formal meeting spaces, well equipped kitchen and breakout areas, storage options along with high-speed WIFI, print and scan facilities for a nominal fee. The well-lit and modern working environment will foster collaboration and productivity, whilst providing options for quiet and private spaces when required.

OUR INNOVATION LAUNCHPAD PARTNERS

The Innovation Launchpad is supported by our industry partners and associations. These partners can refer businesses to the program and provide ongoing support and opportunities for participants.



AusIndustry supports the needs of Australian businesses through grants and funding, access to networks, events and tailored advice.

AusIndustry will provide Innovation Launchpad participants with:

- One-on-one advisory meetings;
- Assistance to identify viable funding opportunities;
- Introductions to members of the Hunter Innovation ecosystem; and
- Access to government programs including R&D Tax Incentive, Co-Operative Research Centres and the Entrepreneurs' Program.


[WWW.BUSINESS.GOV.AU](http://www.business.gov.au)



METS Ignited is an industry-led, government-funded, Growth Centre for the Mining Equipment, Technology and Services (METS) sector.

METS Ignited will provide Innovation Launchpad participants with:

- Assistance in understanding the METS sector and opportunities in the mining global supply chains;
- Advice and facilitation via METS Ignited representatives to capture and overcome barriers;
- The opportunity to raise your profile and links to resources to identify business opportunities in the global mining industry; and
- Exclusive access to a range of METS Ignited workshops and events, and direct access to organisations linked to the METS innovation eco-system.


[WWW.METSIGNITED.ORG](http://www.metsignited.org)



Austmine is the leading industry body for the Australian Mining Equipment, Technology and Services (METS) sector, with over 500 corporate members around the country. Austmine develops, promotes and supports the METS sector and provides growth opportunities and value to members to achieve greater success. Members range from major multi-nationals to innovative SMEs and start-ups, representing the full mining value chain, from greenfields exploration, through to production, processing and export.

Austmine will provide Innovation Launchpad participants with special membership rates offering:

- Networking opportunities with the key players in the mining and METS sectors;
- Opportunities to build your company profile and brand within the mining and METS sectors;
- Connection into strategic conversations shaping the future in trends and technologies for your industry; and
- Increased participation in the mining industry.


[WWW.AUSTMINE.COM.AU](http://www.austmine.com.au)



HunterNet is the preeminent Industry cluster in Australia, offering companies training and development, networking, joint marketing initiatives, joint project bids, focused task forces, trade missions and tendering.

HunterNet will provide Innovation Launchpad participants with:

- The opportunity to attend Industry events and gain introductions to Industry leaders who have succeeded, failed, grown, developed and matured to become successful in their chosen fields;
- Access to HunterNet's extensive network of companies; and
- Assistance to fast track your road to commercialisation.


[WWW.HUNTERNET.COM.AU](http://www.hunternet.com.au)



NERA is the Industry Growth Centre for Australia's energy resources sector, working across the country to create connections for growth.

NERA can provide Innovation Launchpad participants with:

- An understanding of the energy resource sector and opportunities for growth;
- Potential introductions to relevant sector participants across government, industry, research and education;
- Access to NERA representatives for ongoing advice and assistance; and
- Knowledge of and access to relevant NERA events and resources as well as wider sector support programs.


[WWW.NERA.ORG.AU](http://www.nera.org.au)



Central Coast Industry Connect (CCIC) is an umbrella organisation for manufacturing and related industry sectors on the NSW Central Coast. CCIC fosters collaboration and connection between Industry and Business. It aims to interface with all levels of government, education providers and the community to create growth opportunities in the region and add value to its social fabric.

CCIC will provide Innovation Launchpad participants with:

- The opportunity to attend industry events and workshops and have access to industry participants from a variety of sectors;
- Access to government agencies and relevant programs and workshops; and
- Access to the CCIC Food Innovation Australia Cluster and its national connections providing a platform for new opportunities, products and services including mentoring.


[WWW.CENTRALCOASTINDUSTRYCONNECT.COM.AU](http://www.centralcoastindustryconnect.com.au)

Additional partners also include:





For more information please contact
The NSW Energy and Resources Knowledge Hub:

E: hub@energyinnovation.net.au

P: +61 2 4033 9000

www.energyinnovation.net.au

The NSW Energy and Resources Knowledge Hub is an initiative of the NSW Government